



DISCOVER BEAUTY,
DISCOVER JAMILA. ©2024

Jamila®

NORTH COAST



///

WHERE BEAUTY
FINDS  IT'S
DESTINATION

WHERE
LUXURY



[AND]

CONVENIENCE
 COLLIDE

**INHALE HAPPINESS,
EXHALE THE SEA
BREEZE ≈**



**WHERE BEAUTY
FINDS ITS HOME.**

”



//
HERE'S TO BEAUTY,

THROUGH
YOUR EYES!



NEW JERSEY DEVELOPMENTS®

For 23 years, New Jersey Developments has been an Egyptian developer with an American background, significantly impacting the real estate industry in Egypt.

Bringing innovative construction methods to the Egyptian market, NJD has developed over 19 projects in prime locations in Egypt such as New Cairo, New Capital, El Ain El Sokhna, and North Coast.



"" ABOUT JAMILA®

Experience a breathtaking retreat
located in the North Coast of Egypt.



Jamila by New Jersey Developments is distinguished by its unique building design and shape, Jamila ensures that all units has direct sea views, combining luxurious amenities with stunning landscapes to provide an unparalleled experience of beauty and holistic living.



To create a harmonious space where beauty is both seen and felt, uniting guests in a shared appreciation of finding beauty in the stunning environment and luxurious living.



To provide our guests with an extraordinary resort experience that blends modern design, quality, and luxury in perfect harmony. We aim to celebrate the diversity of beauty through a singular, unifying perspective, offering exceptional service and world-class amenities.

UNITY



We create a cohesive and inclusive community where everyone can appreciate the shared beauty of Jamila.

EXCELLENCE



We strive for the highest standards in all we do, ensuring every detail of our resort speaks of quality and luxury.

WELL-BEING

We focus on holistic health, offering amenities and activities that promote physical, mental, and emotional wellness.



SUSTAINABILITY

We are committed to preserving the natural beauty of our surroundings, integrating green spaces and eco-friendly practices throughout our resort.



INTEGRITY

We conduct our business with honesty and transparency, building trust with our guests and partners.



OUR VALUES //



While beauty is often perceived subjectively, Jamila embodies a singular vision that brings together guests from all walks of life.



With landscapes like no other and revitalizing greenery in every corner, Jamila provides a holistic, complete spectrum of facilities that facilitates connections and moments that are beautiful, genuine, and pure. Jamila brings us together in agreement with one commonality: the beauty within Jamila.

OUR STORY



LOCATION

2.5

HOURS

away from Cairo Gates

35

MINUTES

from International Airport

1.5

MINUTES

away from New Alamein

5

MINUTES

away from Almazah Bay



FACIL



ITIES

5 STAR HOTEL

Experience unparalleled hospitality and world-class service.

F&B INCLUDES ALL INTERNATIONAL FRANCHISES

Indulge in a global culinary journey with renowned international franchises.

COMMERCIAL MALL INCLUDES ALL INTERNATIONAL BRANDS

Shop till you drop with a wide array of premium international brands.



LAKES

Relax and unwind by our serene lakes, perfect for a peaceful retreat.

SWIMMING POOLS

Dive into luxury with our stunning, crystal-clear swimming pools.

CLUB HOUSE

Enjoy exclusive access to our elegant clubhouse, a hub of leisure and relaxation.





DANCING FOUNTAIN

Enjoy the beauty and elegance of our dancing fountain.

GYM

Stay fit and healthy with state-of-the-art equipment and facilities.

SPA

Rejuvenate your mind and body with our luxurious spa treatments.

UNDERGROUND PARKING

Convenience and security with our spacious underground parking facilities.



ALL UNITS HAVE **DIRECT BEACH VIEWS**,
PROVIDING BREATHTAKING VISTAS OF
THE PRISTINE SHORELINE.



263 KILOMETERS FROM CAIRO,
NESTLED ALONG EL DABAA ROAD.

LAND AREA **130** ACRES

FOOT PRINT **9%**

BEACH FRONT **700M**

GREEN SPACES
& WATER FEATURES **91%**

UNIT TYPES

STARTING
SPACES FROM **79** M2

CHALET **1** BEDROOM
2 BEDROOMS
3 BEDROOMS



DUPLEX

STARTING FROM

2 BEDROOMS

D-VILLA

STARTING FROM

2 BEDROOMS

STUDIOS



LAYOUT & DESIGN PHASES-

JAMILA IS DIVIDED INTO TWO PHASES

FIRST PHASE WITH AREA OF 50 ACRES

SECOND PHASE WITH AN AREA OF 80 ACRES





01

CHALETs

02

POOLS & LAGOONS

03

CLUB HOUSE

04

VIP APPARTMENTS
LANDSCAPE

CABANAS

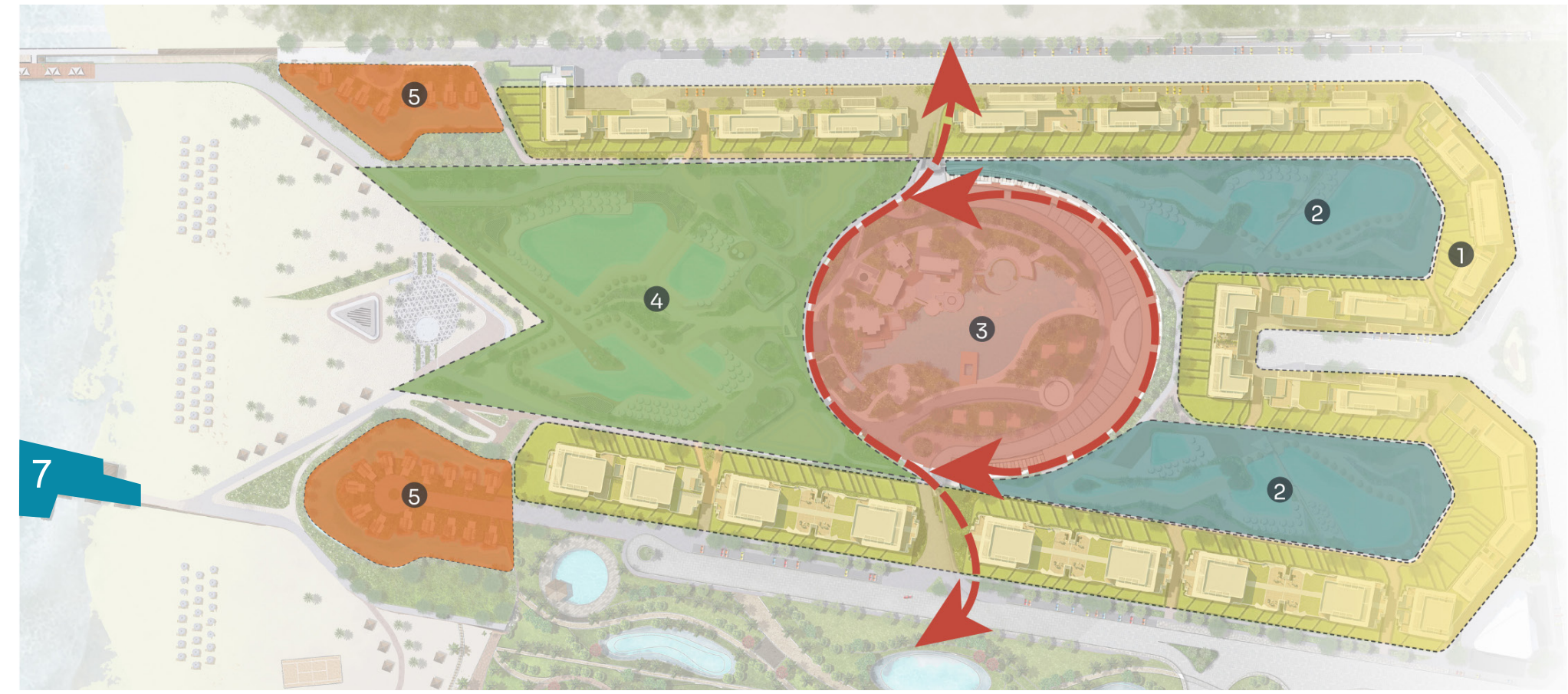
05

COMMERCIAL
AREA

06

MARINA

07



MAP



📍 Airport

📍 Jamila®

📍 Ras El Hekma

📍 Sidi Abd El Rahman

📍 New Alamien

📍 Cairo



BUILDING LAYOUT & DESIGN



BUILDING

"H"

TYPES

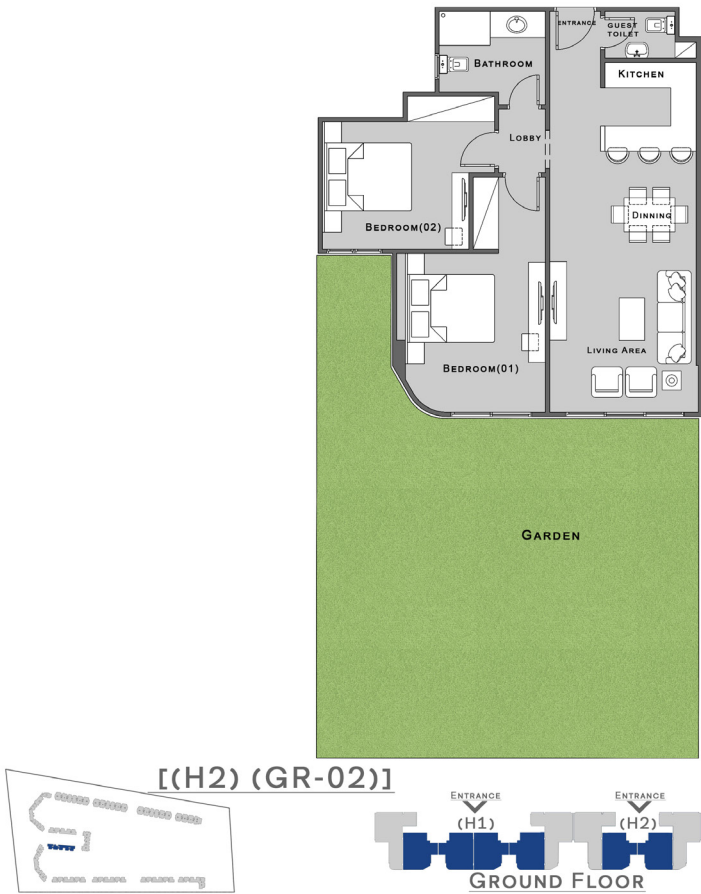
GROUND FLOOR
TYPICAL FLOOR
ROOF FLOOR
D VILLA

GROUND FLOOR

2 Bedrooms Unit

Area = 105 M²

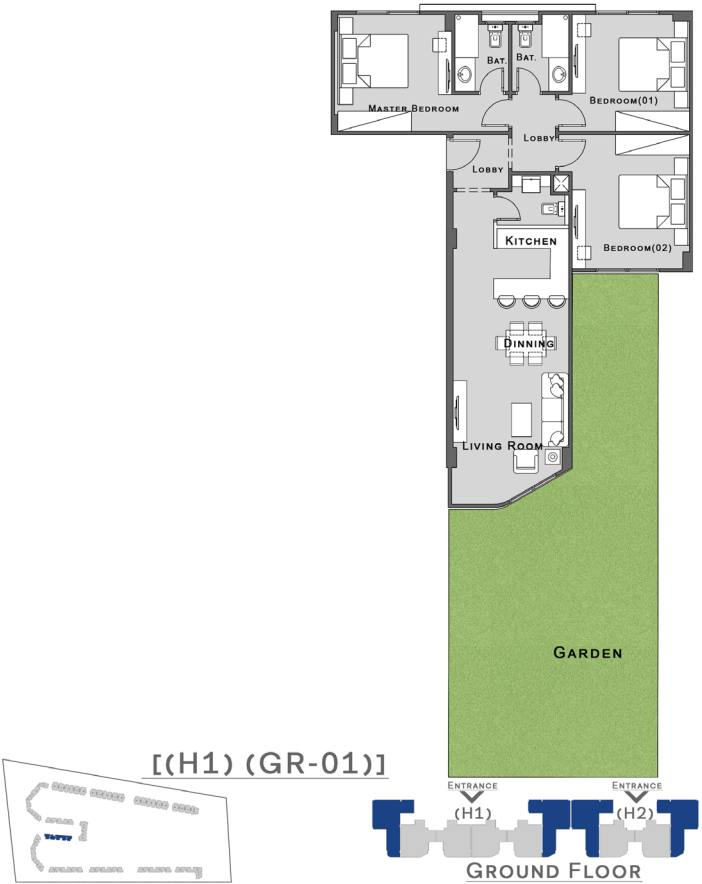
Garden Area = Strat 91.06 M² To 91.97 M²



3 Bedrooms Unit

Area = 139 M² & 140 M²

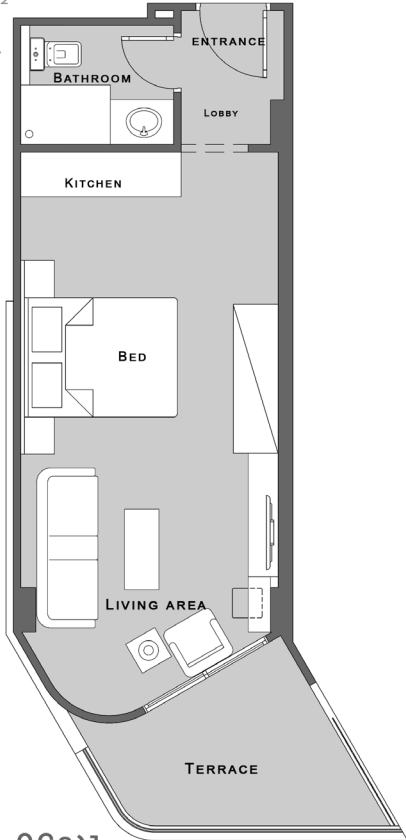
Garden Area = Strat 79.09 M² To 98.14 M²



TYPICAL FLOOR

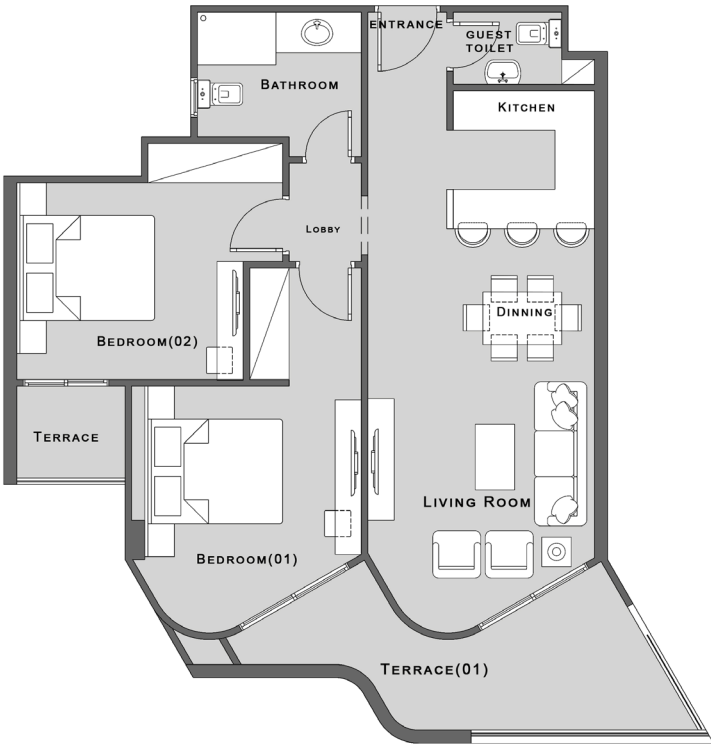
Studio Unit

Area = Strat **61** M² To **62** M²
- From **1st** Floor To **5th** Floor .



2 Bedrooms Unit

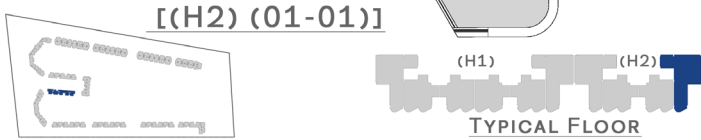
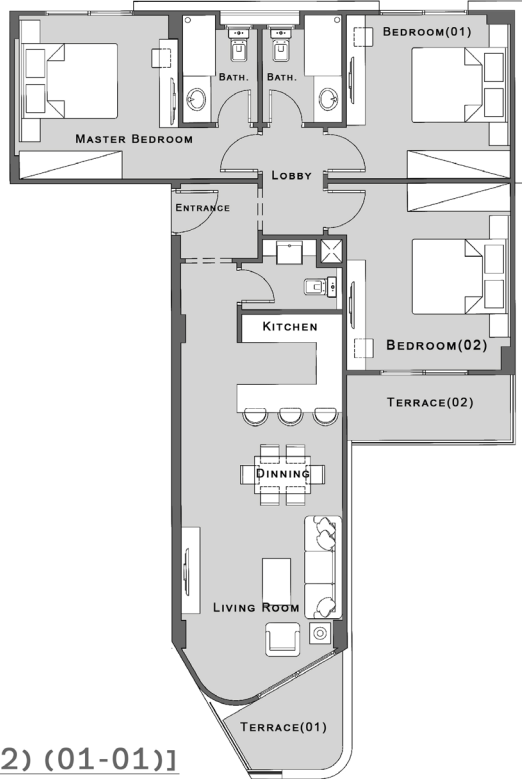
Area = Strat **97** M² To **128** M²
- From **1st** Floor To **5th** Floor .



TYPICAL FLOOR

3 Bedrooms Unit

Area = Strat **154** M² To **155** M²
- From **1st** Floor To **5th** Floor .



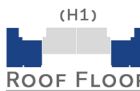
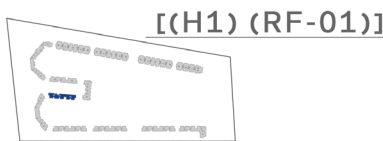
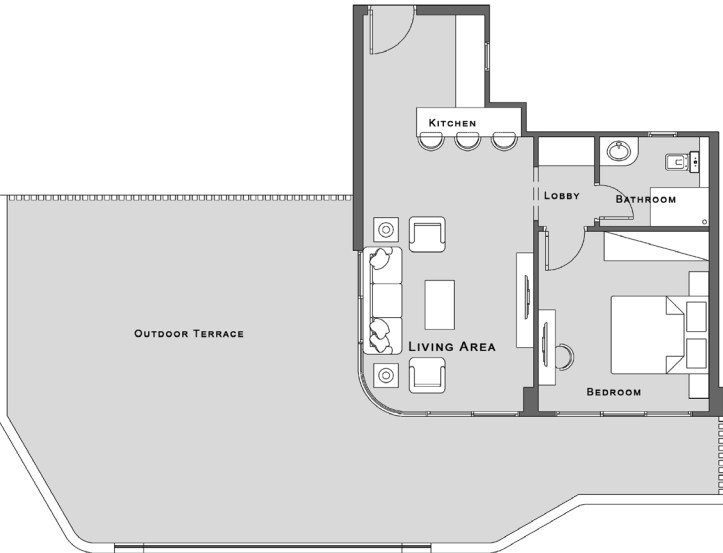
EXPERIENCE BEAUTY DIFFERENTLY



ROOF FLOOR

1 Bedroom Unit

Area = **75** M²
1. Code : [(H1) (RF-01)] - Outdoor = 90.64 m²
2. Code : [(H1) (RF-04)] - Outdoor = 89.96 m²



WHERE BEAUTY FIND'S IT'S DESTINATION



ROOF FLOOR & FIFTH FLOOR

D - Villa

Area = **167** M² & **177** M²
1. Code : [(H1) (05-03)] - Outdoor = 40.50 m²
2. Code : [(H1) (05-04)] - Outdoor = 43.33 m²



BUILDING

" | "

I

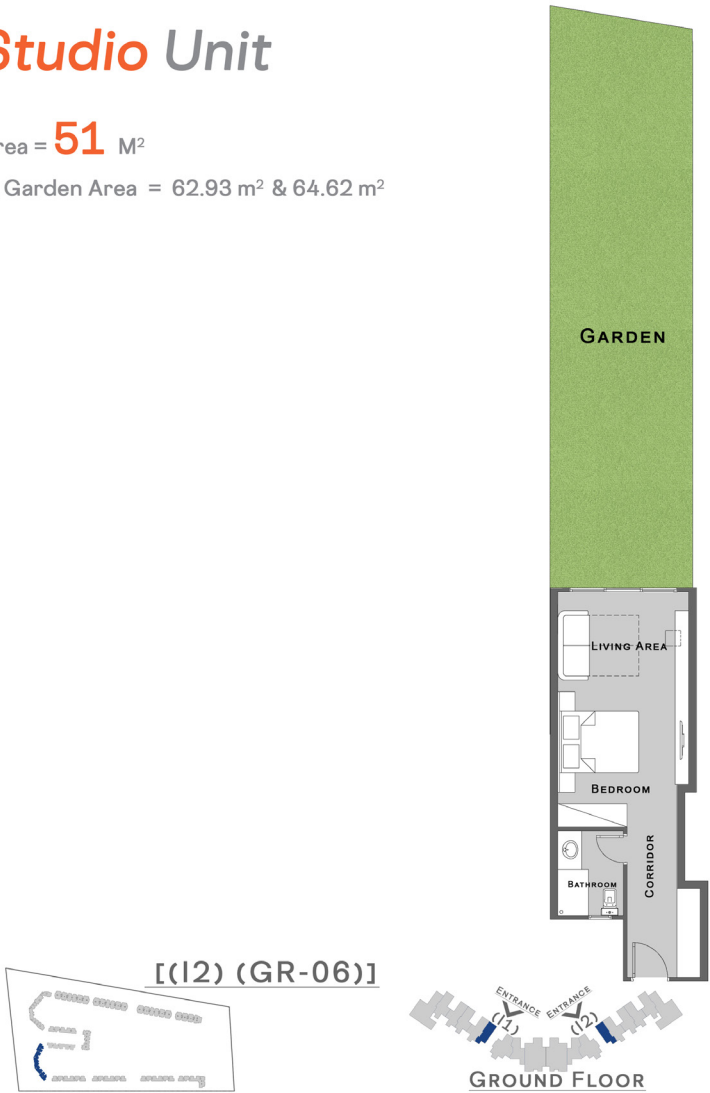
TYPES

GROUND FLOOR
TYPICAL FLOOR
ROOF FLOOR
D VILLA

GROUND FLOOR

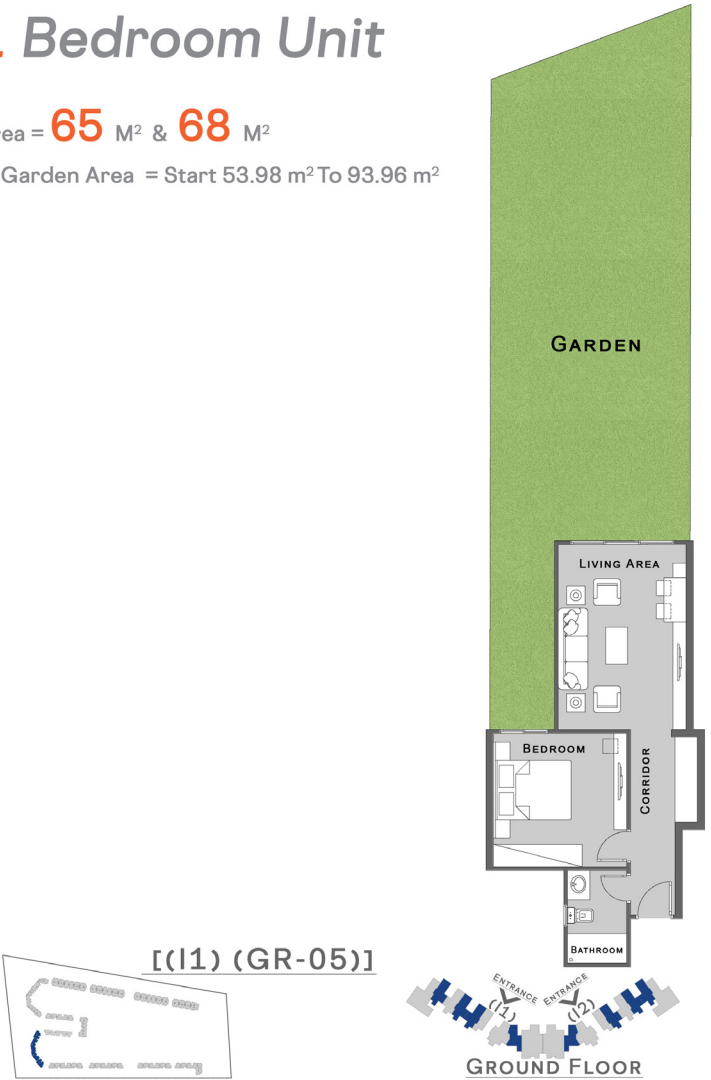
Studio Unit

Area = **51** M²
1. Garden Area = 62.93 m² & 64.62 m²



1 Bedroom Unit

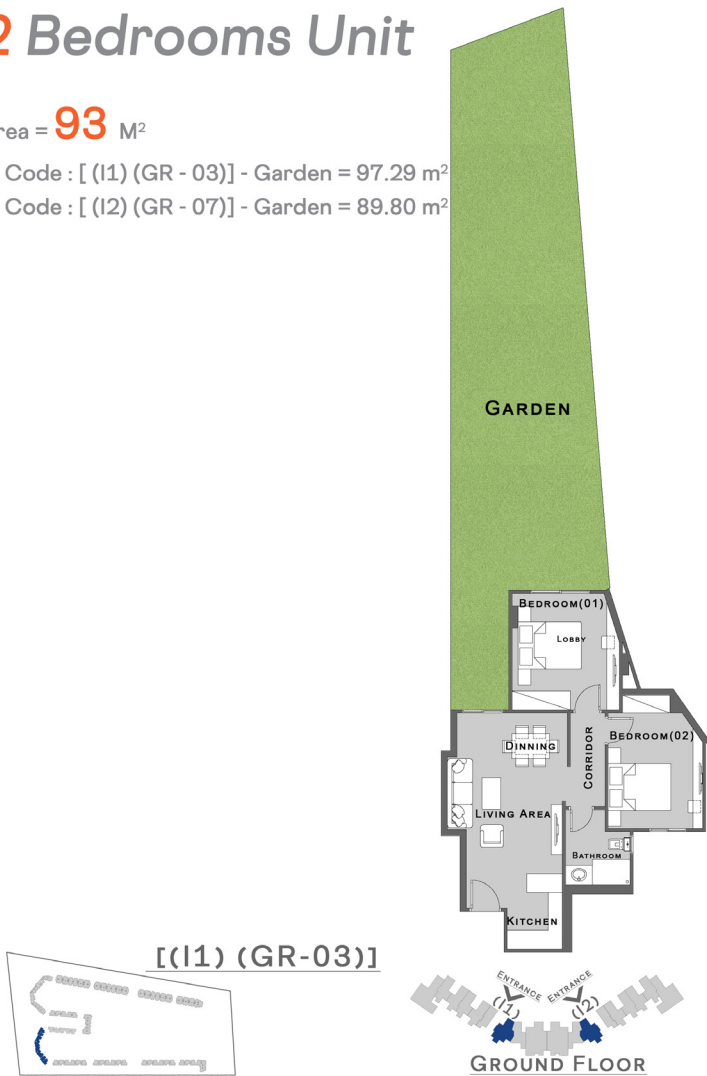
Area = **65** M² & **68** M²
1. Garden Area = Start 53.98 m² To 93.96 m²



GROUND FLOOR

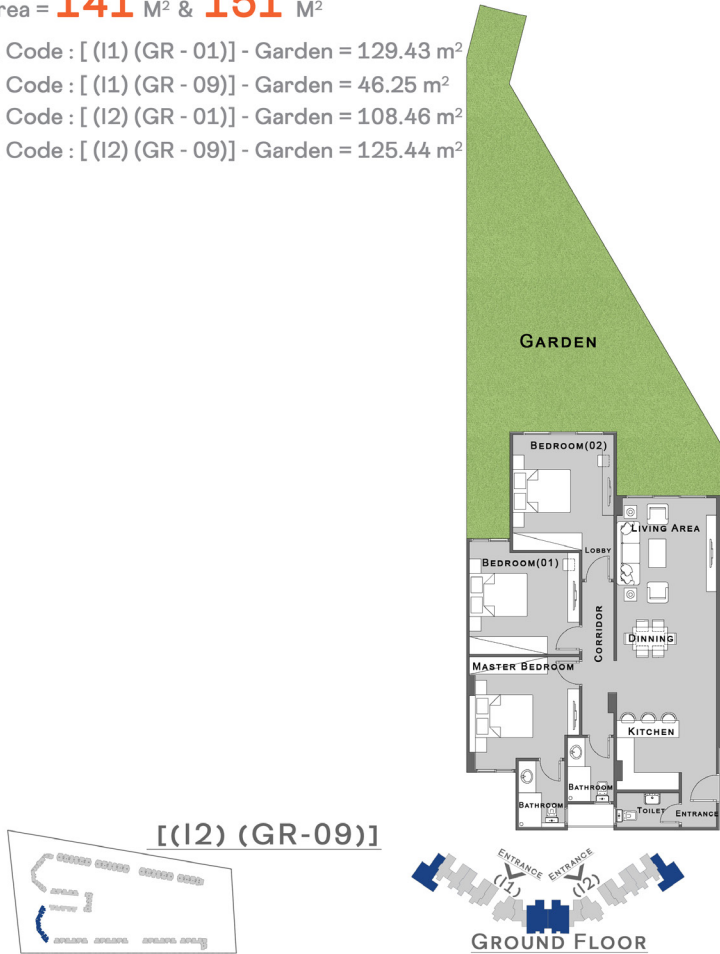
2 Bedrooms Unit

- Area = **93** M²
- 1. Code : [(I1) (GR - 03)] - Garden = 97.29 m²
 - 2. Code : [(I2) (GR - 07)] - Garden = 89.80 m²



3 Bedrooms Unit

- Area = **141** M² & **151** M²
- 1. Code : [(I1) (GR - 01)] - Garden = 129.43 m²
 - 2. Code : [(I1) (GR - 09)] - Garden = 46.25 m²
 - 3. Code : [(I2) (GR - 01)] - Garden = 108.46 m²
 - 4. Code : [(I2) (GR - 09)] - Garden = 125.44 m²



GROUND FLOOR

Duplex Unit

- Area = **147** M²
- 1. Code : [(I1) (GR - 07)] - Garden = 68.57 m²
 - 2. Code : [(I2) (GR - 04)] - Garden = 92.36 m²



EXPERIENCE BEAUTY DIFFERENTLY



TYPICAL FLOOR

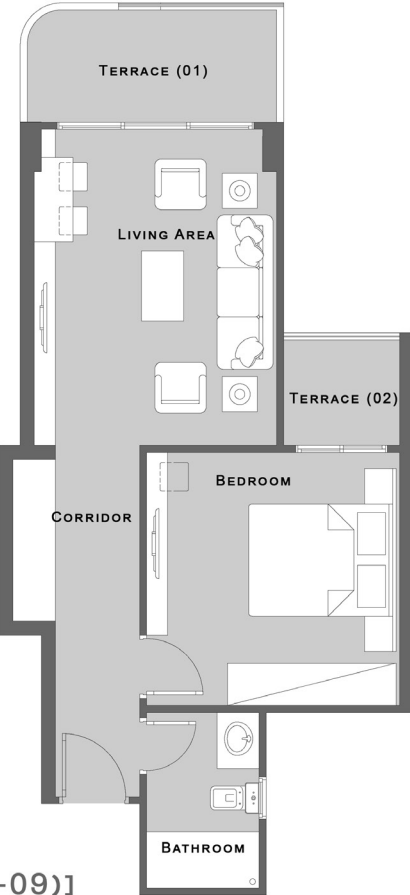
Studio Unit

Area = **57** M² - **60** M²
- From **1st** Floor To **5th** Floor .



1 Bedroom Unit

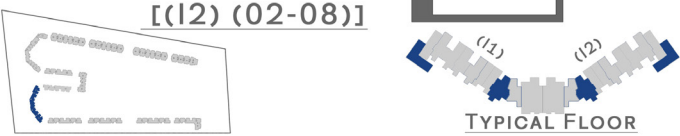
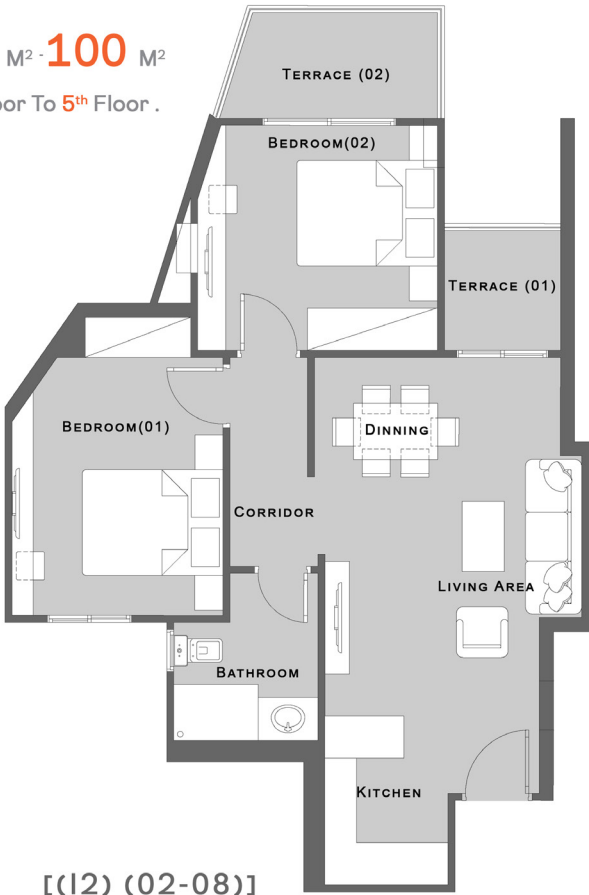
Area = **72** M² & **79** M²
- From **1st** Floor To **5th** Floor .



TYPICAL FLOOR

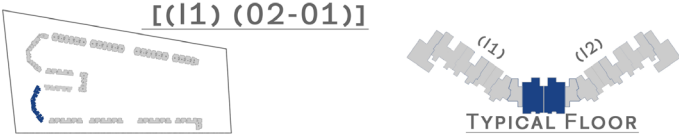
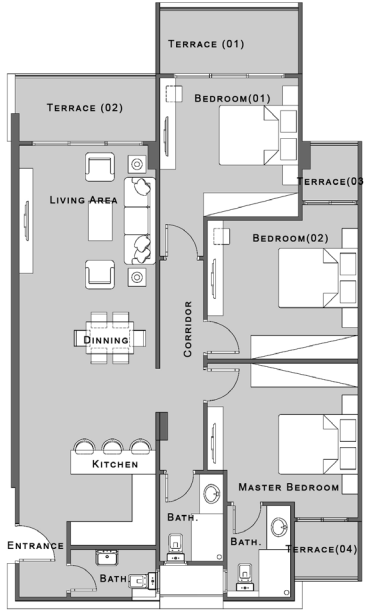
2 Bedrooms Unit

Area = **97** M² - **100** M²
- From **1st** Floor To **5th** Floor .



3 Bedrooms Unit

Area = **175** M²
- From **1st** Floor To **5th** Floor .

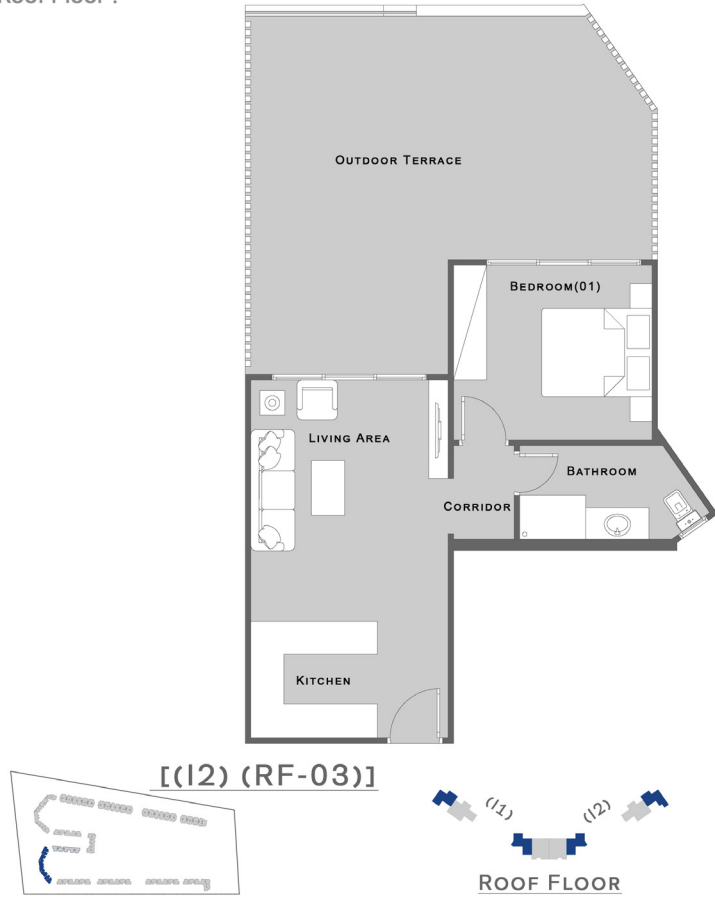


ROOF FLOOR

1 Bedroom Unit

Area = 59 M² & 68 M²

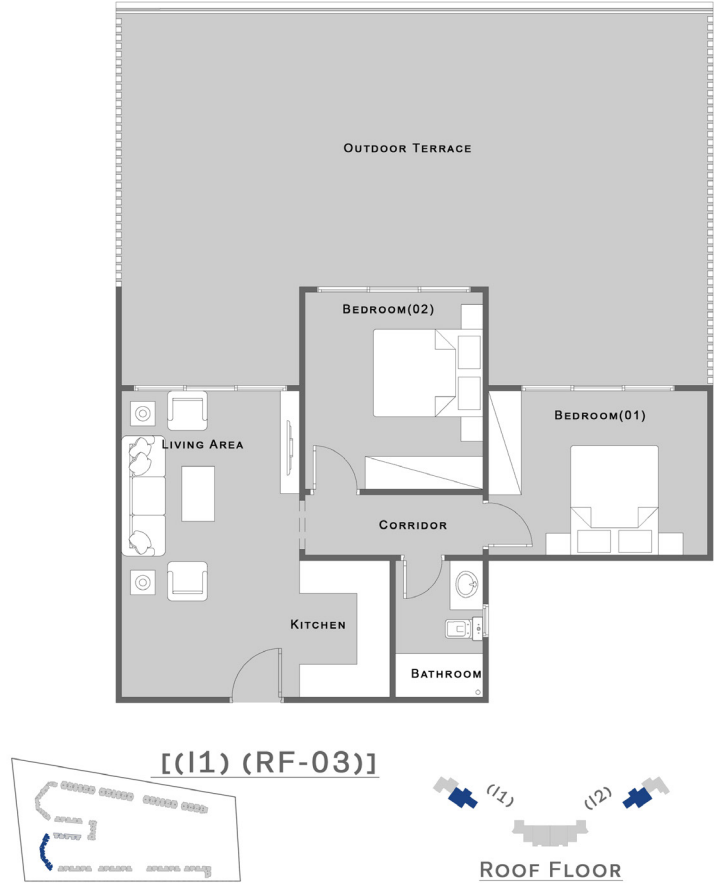
- Roof Floor .



2 Bedrooms Unit

Area = 87 M²

- Roof Floor .

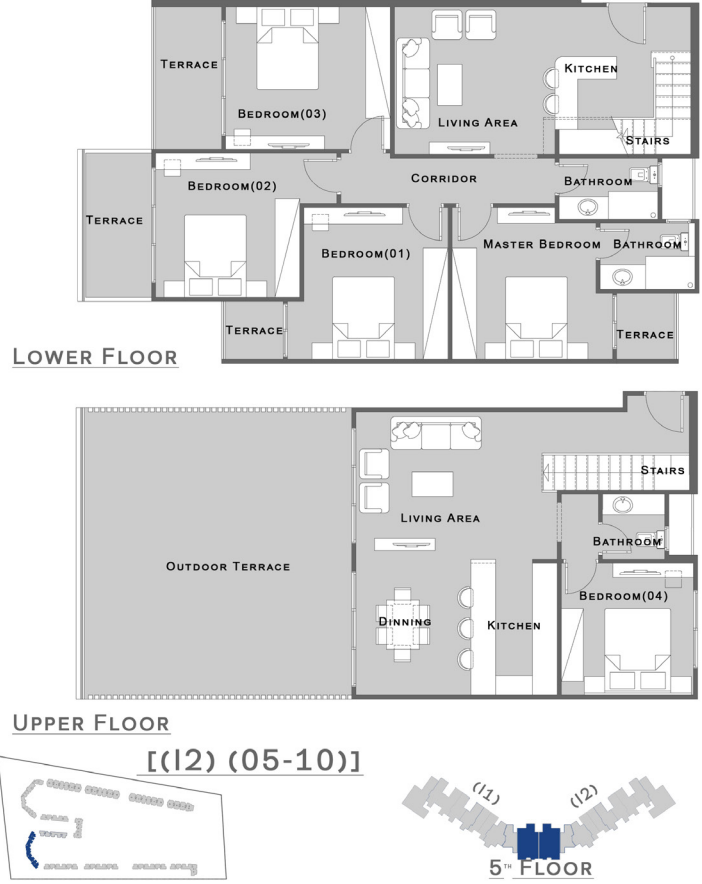


ROOF FLOOR & FIFTH FLOOR

D - Villa

Area = 260 M²

- 5th Floor & Roof Floor .



BUILDING

" J "

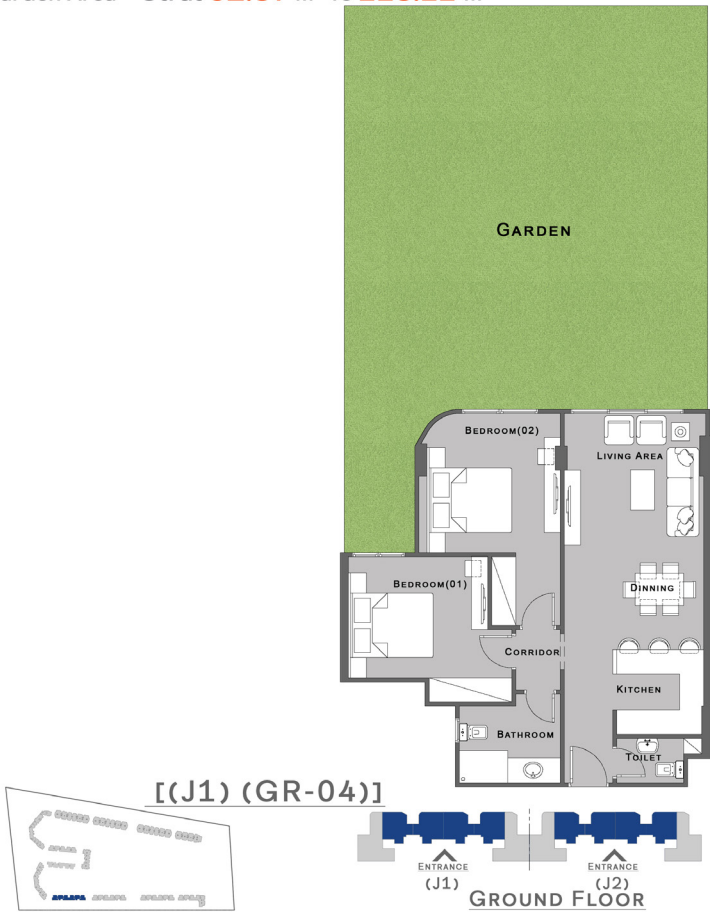
TYPES

GROUND FLOOR
TYPICAL FLOOR
ROOF FLOOR
D VILLA

GROUND FLOOR

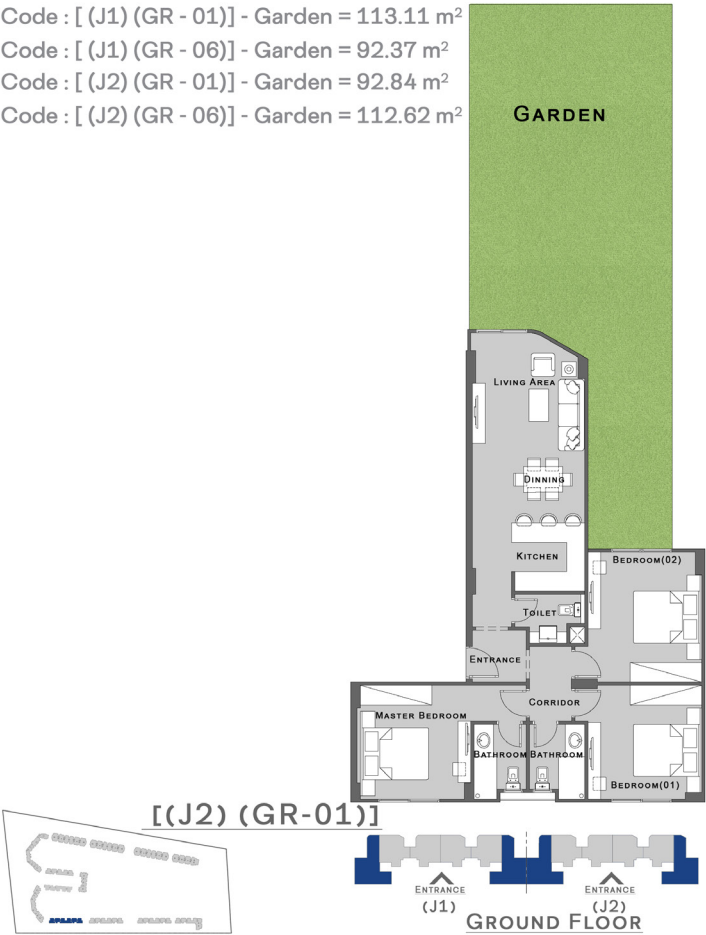
2 Bedrooms Unit

Area = 103 M²
Garden Area = Strat 92.37 M² To 113.11 M²



3 Bedrooms Unit

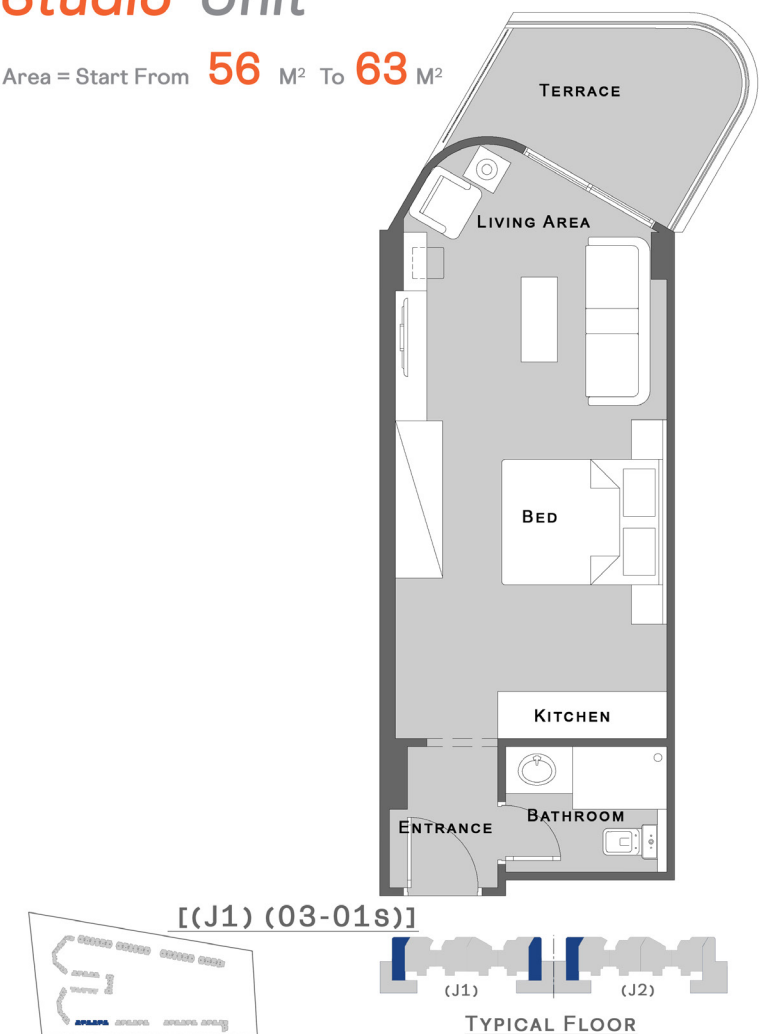
Area = 138 M² & 139 M²
1. Code : [(J1) (GR - 01)] - Garden = 113.11 m²
2. Code : [(J1) (GR - 06)] - Garden = 92.37 m²
3. Code : [(J2) (GR - 01)] - Garden = 92.84 m²
4. Code : [(J2) (GR - 06)] - Garden = 112.62 m²



TYPICAL FLOOR

Studio Unit

Area = Start From **56** M² To **63** M²

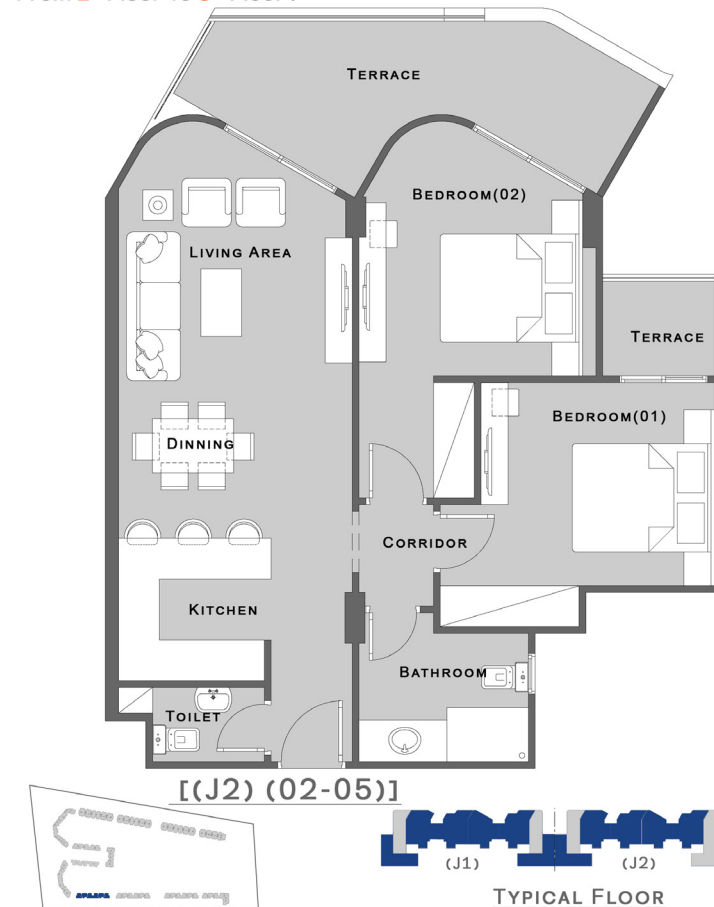


Disclaimer : This brochure is for informational purposes only. All details are subject to change without notice. Prospective buyers should make their own inquiries and seek independent advice before purchasing.

TYPICAL FLOOR

2 Bedrooms Unit

Area = Start **97** M² To **128** M²
- From **1st** Floor To **5th** Floor .



Disclaimer : This brochure is for informational purposes only. All details are subject to change without notice. Prospective buyers should make their own inquiries and seek independent advice before purchasing.

EXPERIENCE BEAUTY DIFFERENTLY

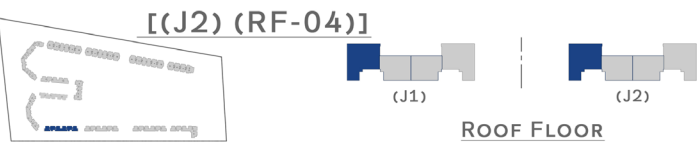
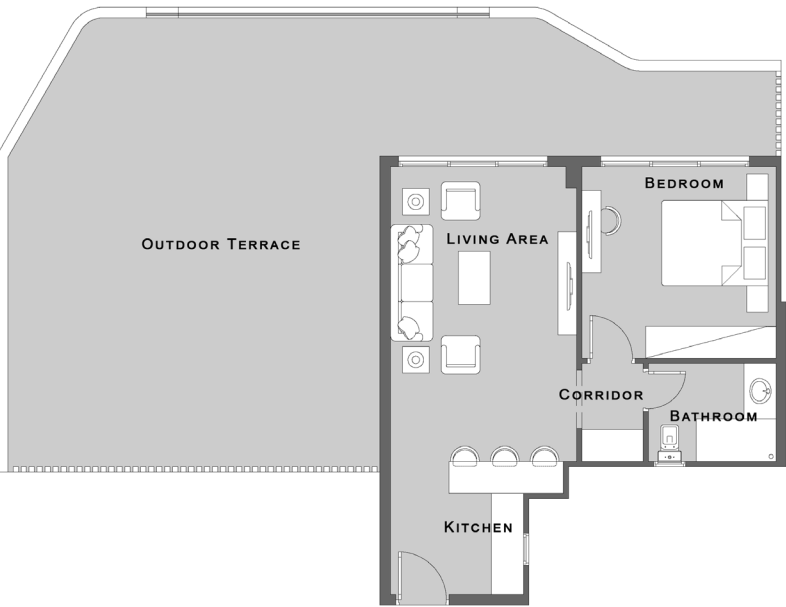


ROOF FLOOR

1 Bedroom

Area = **75.40** M²

- Outdoor Terrace = 89.98 m² .



ROOF FLOOR

WHERE BEAUTY FIND'S IT'S DESTINATION

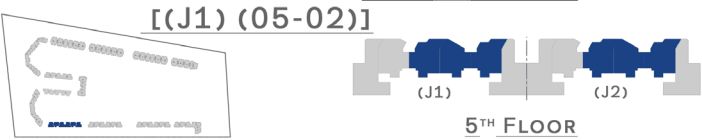
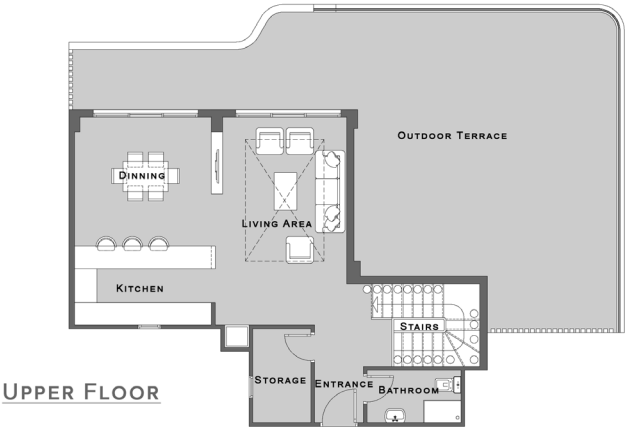
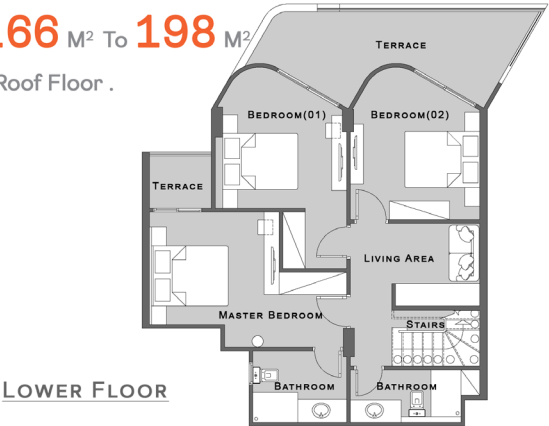


ROOF FLOOR & FIFTH FLOOR

D - Villa

Area = Start **166** M² To **198** M²

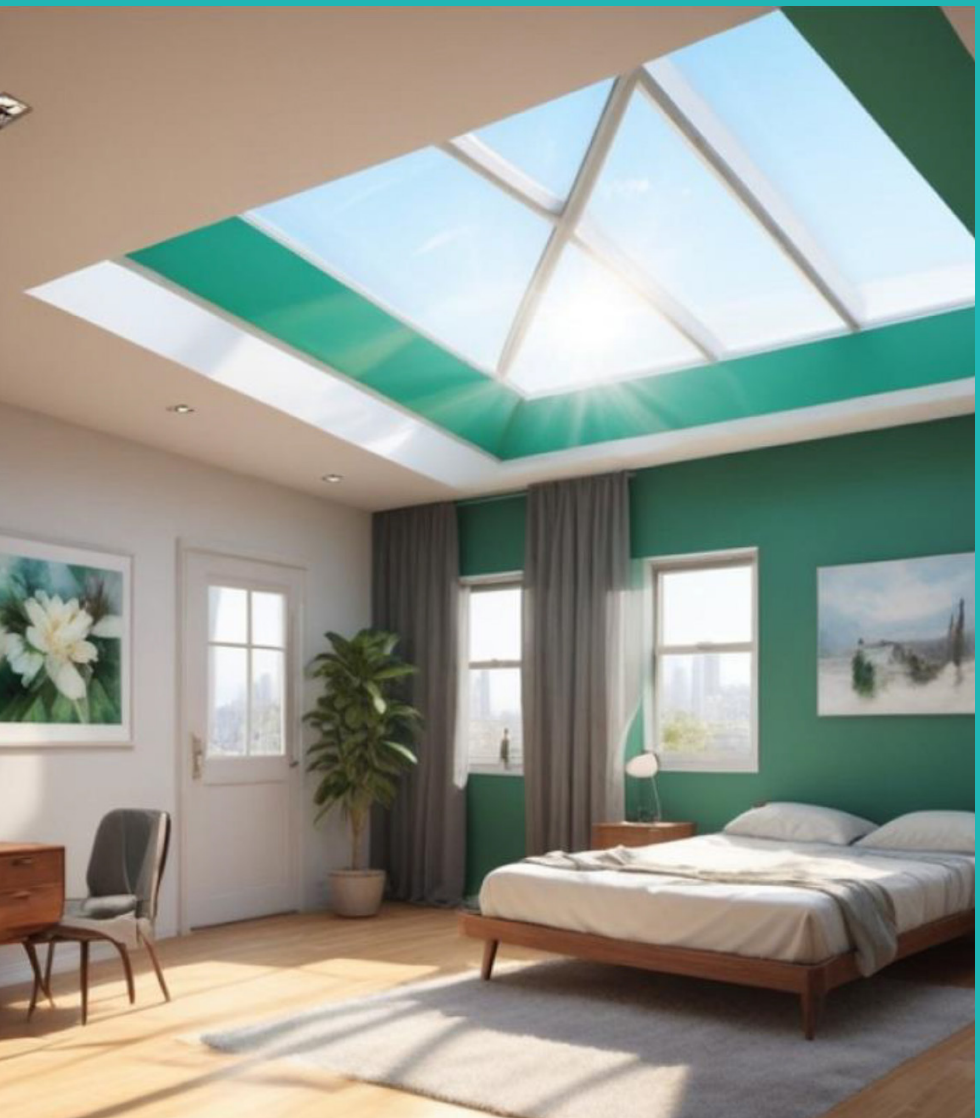
- 5th Floor & Roof Floor .



5TH FLOOR



D VILLA



BUILDING

"K"

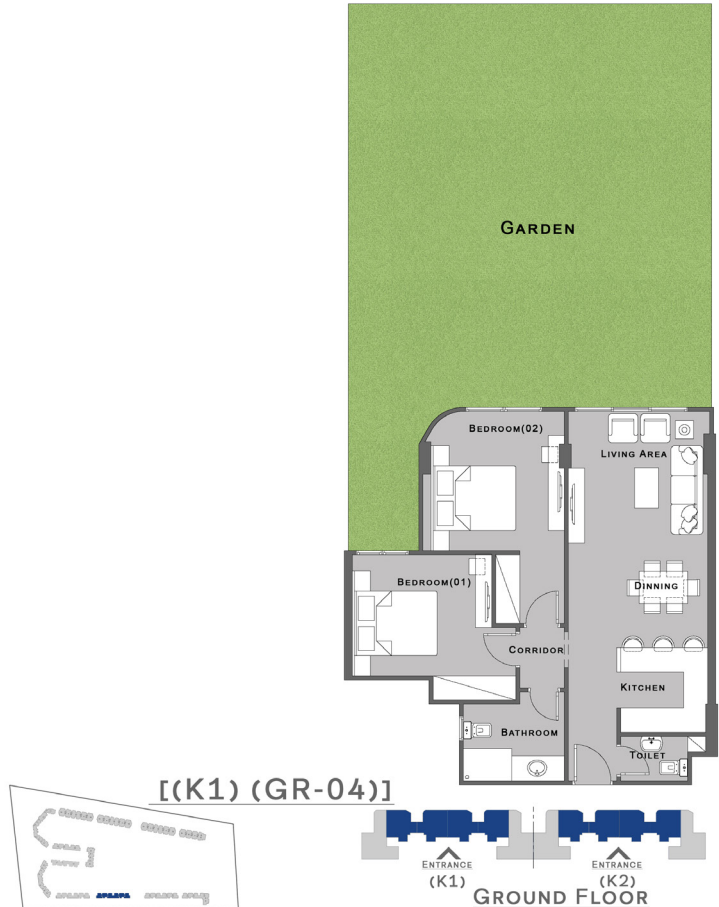
TYPES

GROUND FLOOR
TYPICAL FLOOR
ROOF FLOOR
D VILLA

GROUND FLOOR

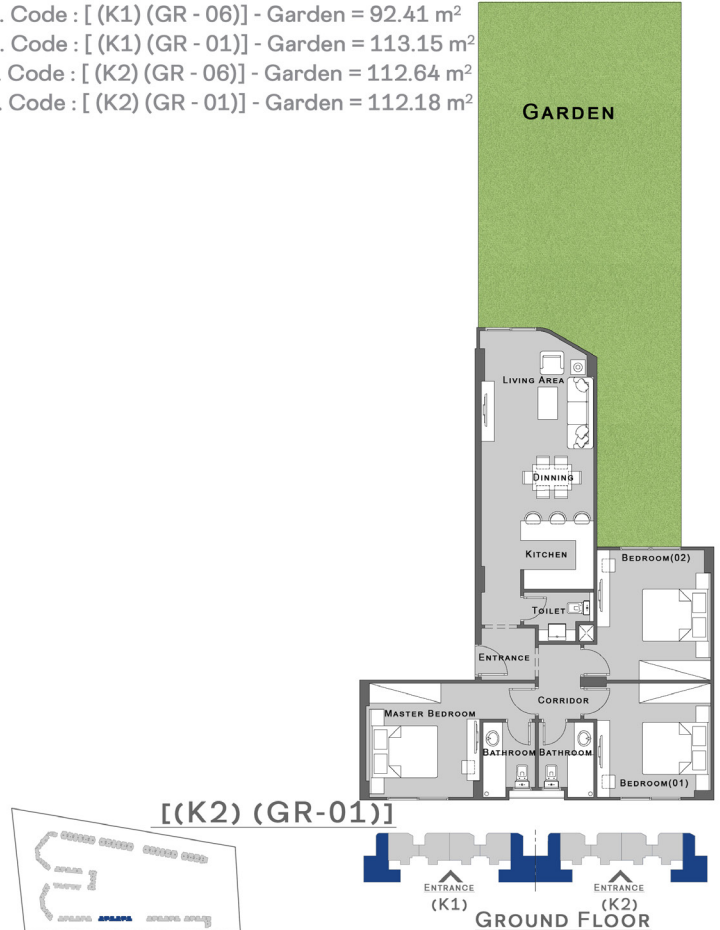
2 Bedrooms Unit

Area = 103 M²
Garden Area = Strat 111.01 M² To 111.50 M²



3 Bedrooms Unit

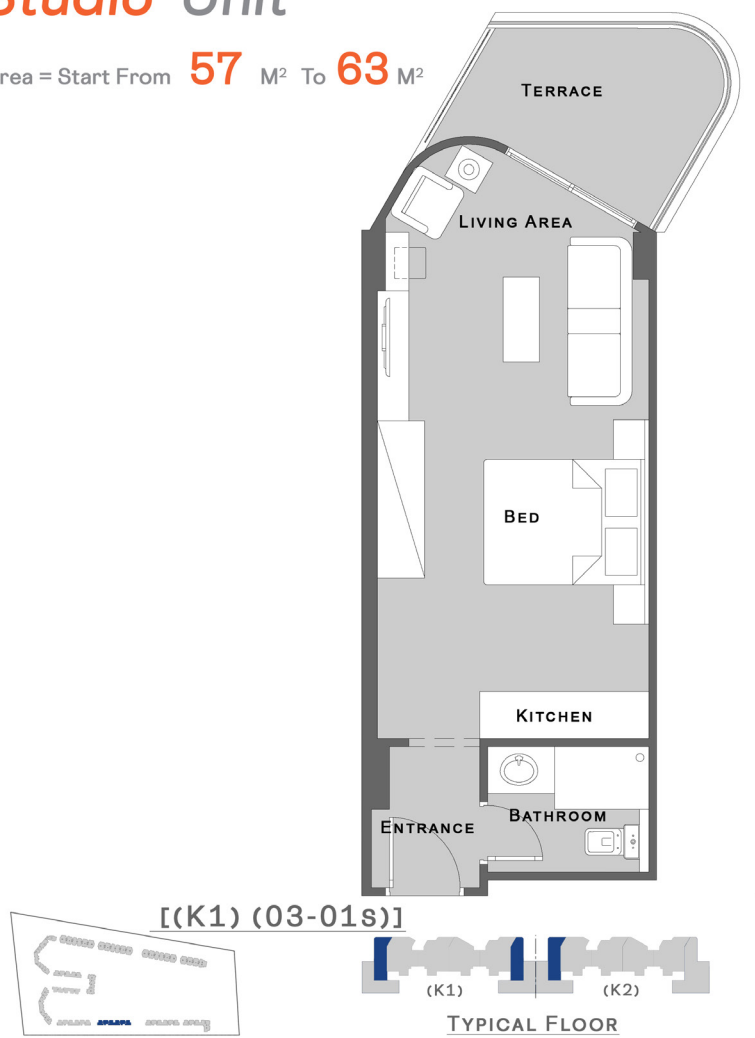
Area = 138 M² & 139 M²
1. Code : [(K1) (GR - 06)] - Garden = 92.41 m²
1. Code : [(K1) (GR - 01)] - Garden = 113.15 m²
2. Code : [(K2) (GR - 06)] - Garden = 112.64 m²
3. Code : [(K2) (GR - 01)] - Garden = 112.18 m²



TYPICAL FLOOR

Studio Unit

Area = Start From **57** M² To **63** M²

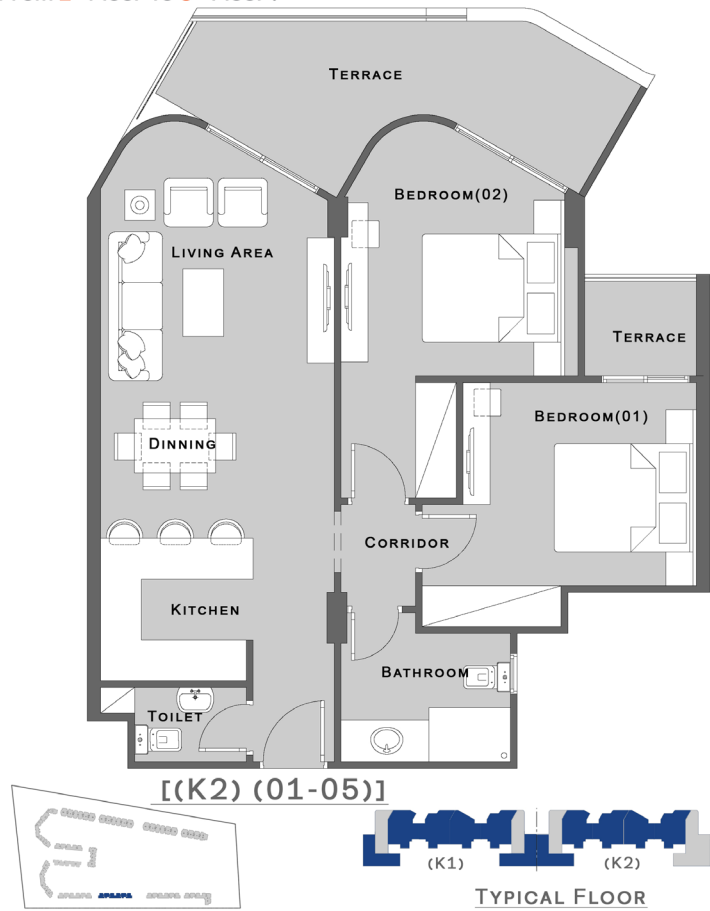


Disclaimer : This brochure is for informational purposes only. All details are subject to change without notice. Prospective buyers should make their own inquiries and seek independent advice before purchasing.

TYPICAL FLOOR

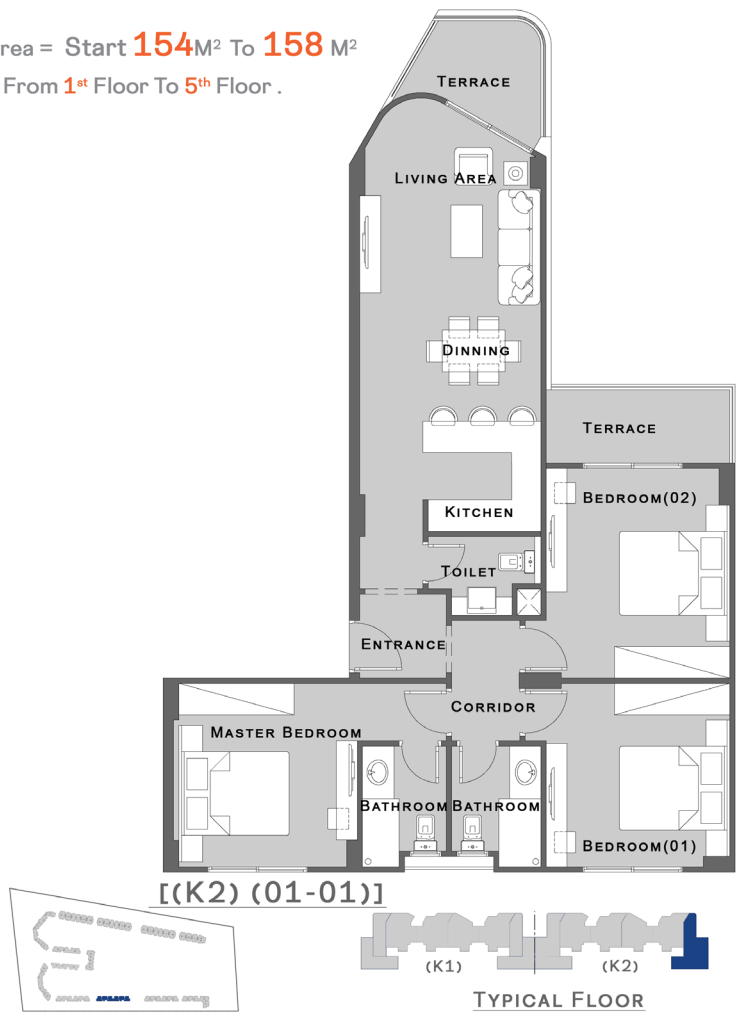
2 Bedrooms Unit

Area = Start **97** M² To **128** M²
- From **1st** Floor To **5th** Floor .



3 Bedrooms Unit

Area = Start **154**M² To **158** M²
- From **1st** Floor To **5th** Floor .



Disclaimer : This brochure is for informational purposes only. All details are subject to change without notice. Prospective buyers should make their own inquiries and seek independent advice before purchasing.

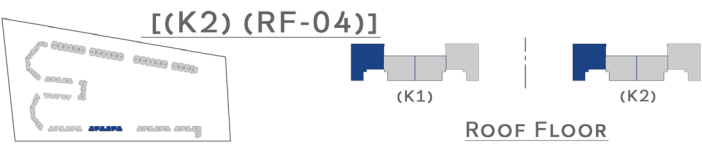
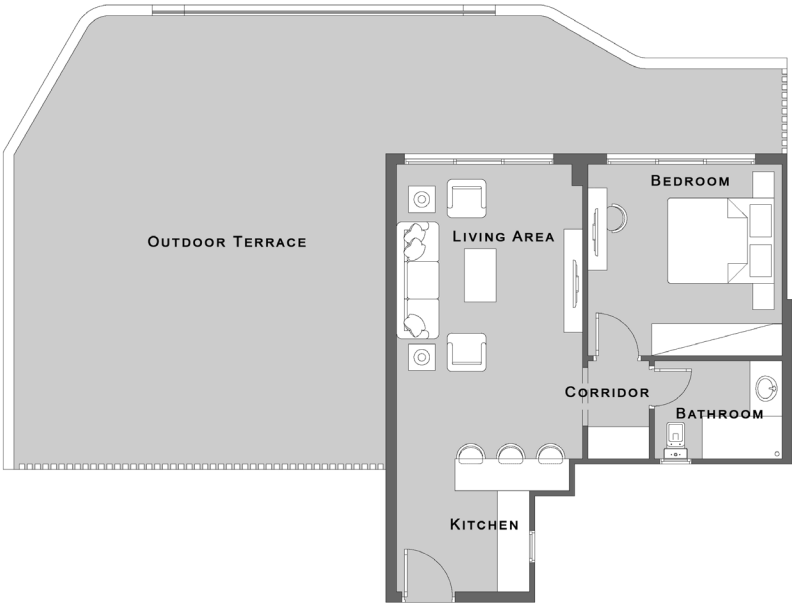
EXPERIENCE BEAUTY DIFFERENTLY



ROOF FLOOR

1 Bedroom

Area = **75.40** M²
- Outdoor Terrace = 89.98 m² .



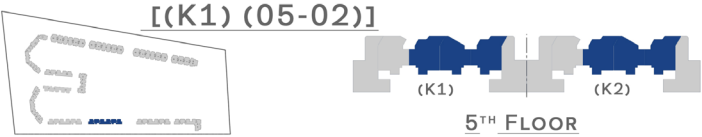
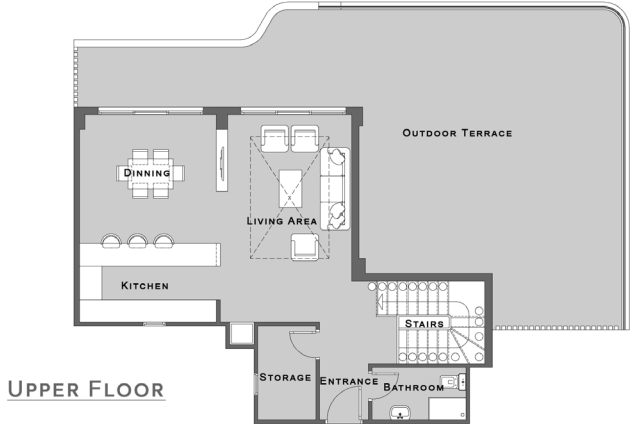
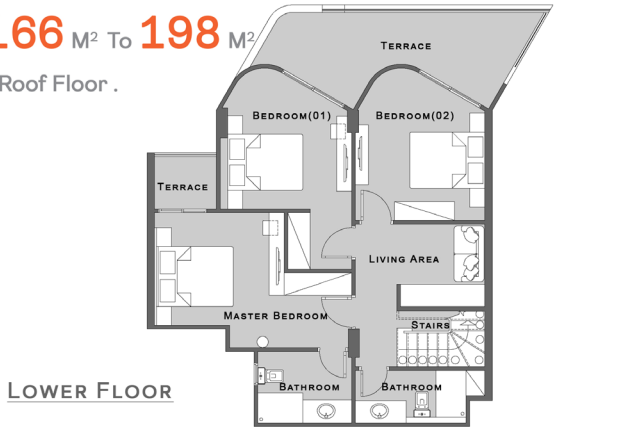
WHERE BEAUTY FIND'S IT'S DESTINATION



ROOF FLOOR

D - Villa

Area = Start **166** M² To **198** M²
- **5th** Floor & Roof Floor .



D VILLA



BUILDING

" " " "

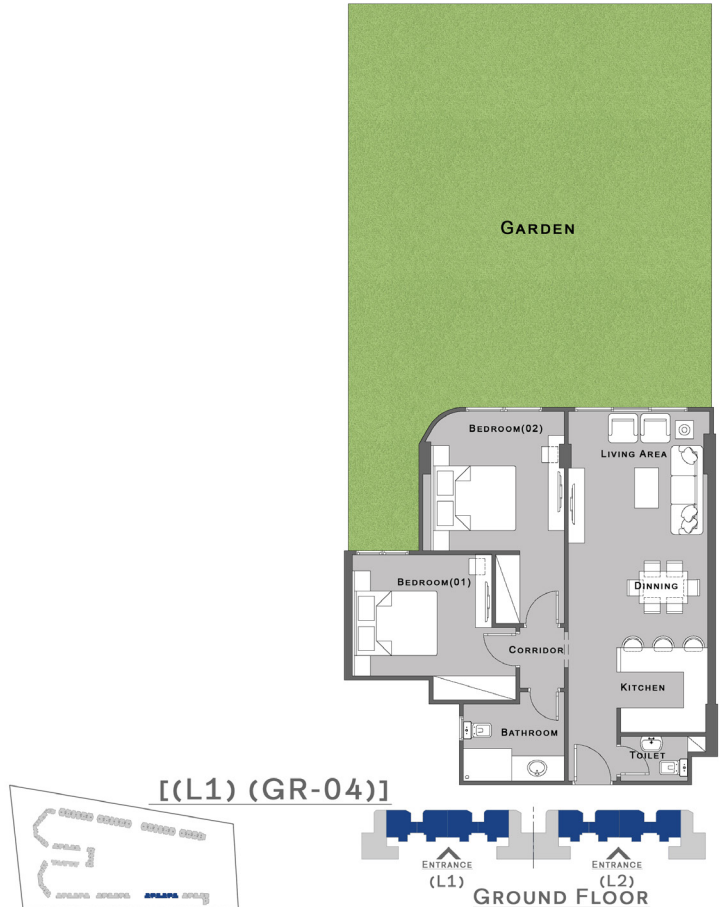
L TYPES

GROUND FLOOR
TYPICAL FLOOR
ROOF FLOOR
D VILLA

GROUND FLOOR

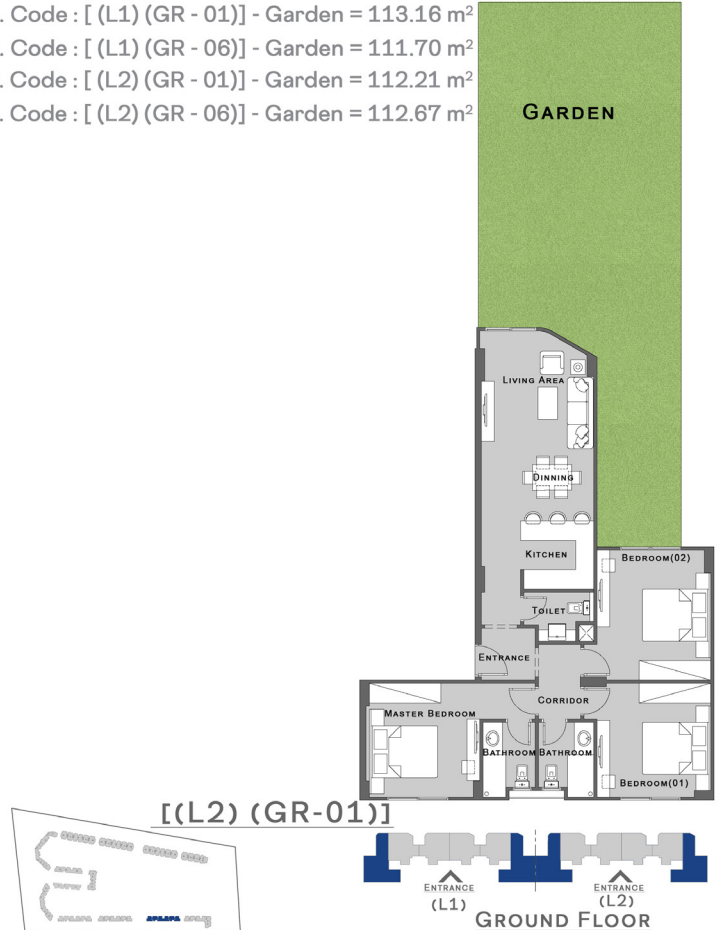
2 Bedrooms Unit

Area = 103 M²
Garden Area = Strat 111.03 M² To 111.55 M²



3 Bedrooms Unit

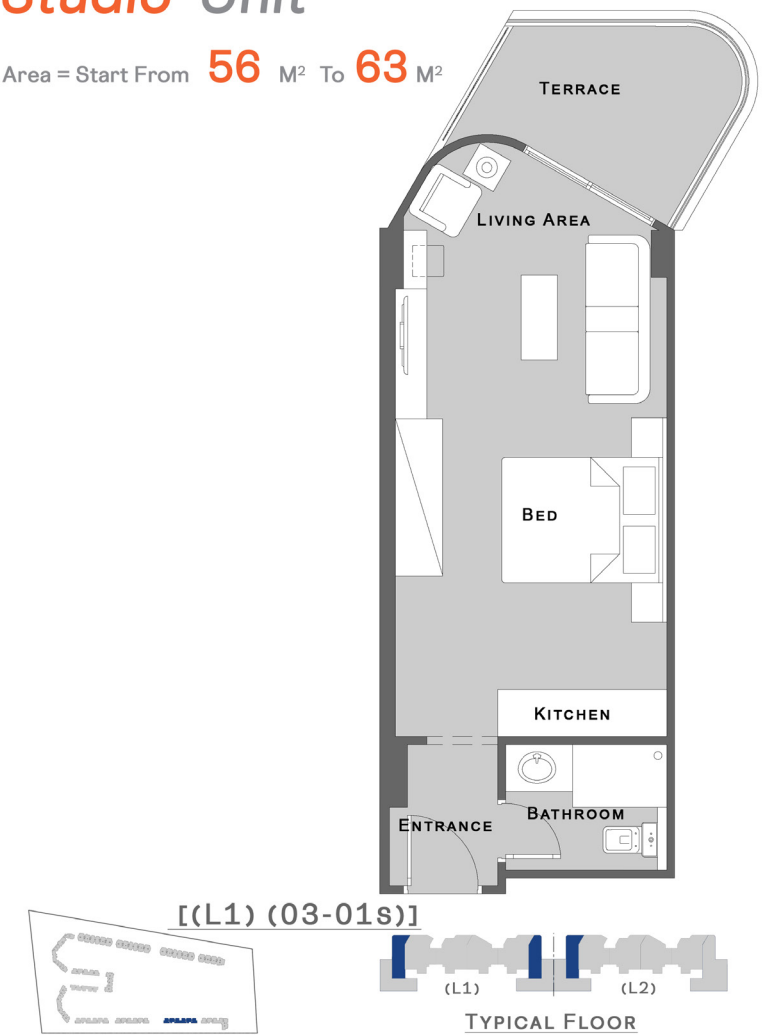
Area = 138 M² & 139 M²
1. Code : [(L1) (GR - 01)] - Garden = 113.16 m²
2. Code : [(L1) (GR - 06)] - Garden = 111.70 m²
3. Code : [(L2) (GR - 01)] - Garden = 112.21 m²
4. Code : [(L2) (GR - 06)] - Garden = 112.67 m²



TYPICAL FLOOR

Studio Unit

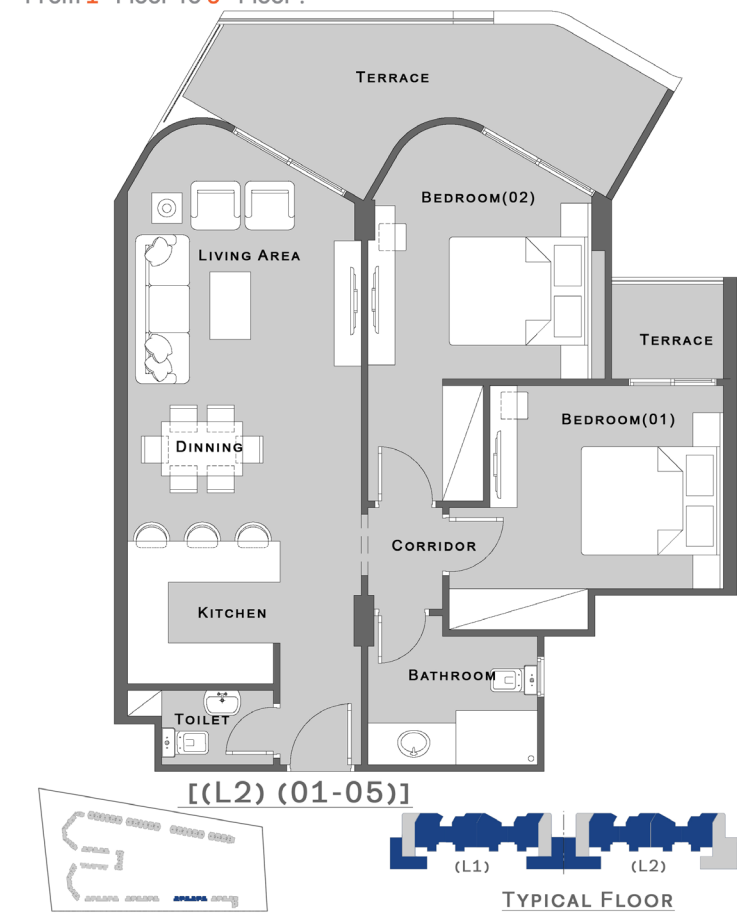
Area = Start From **56** M² To **63** M²



2 Bedrooms Unit

Area = Start **97** M² To **128** M²

- From **1st** Floor To **5th** Floor .

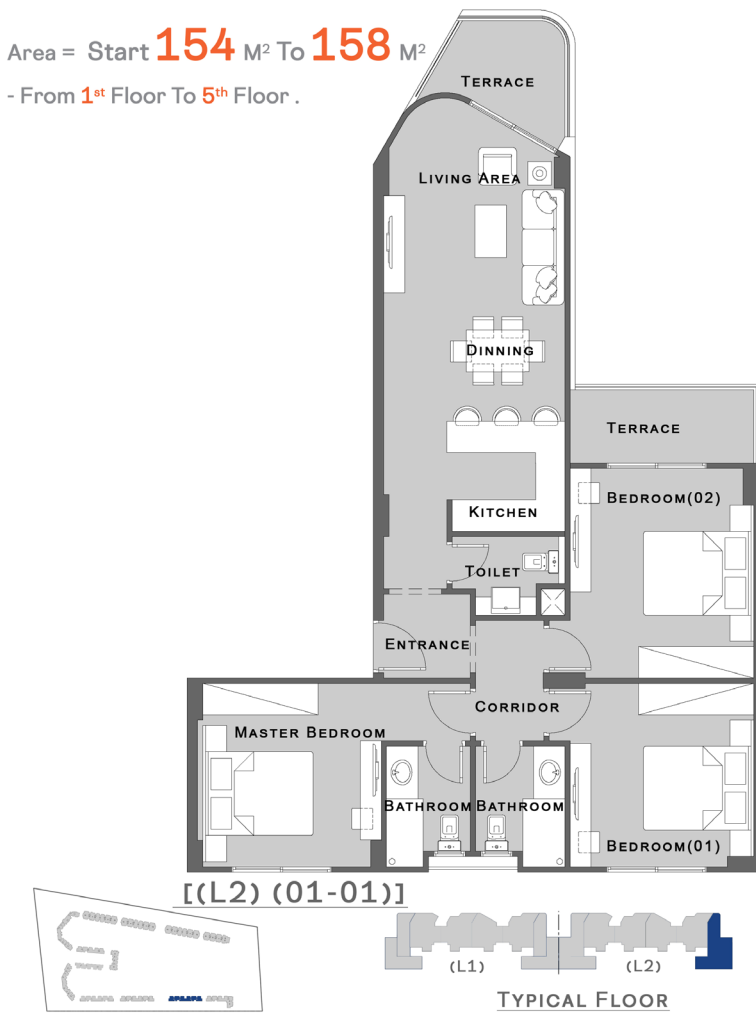


TYPICAL FLOOR

3 Bedrooms Unit

Area = Start **154** M² To **158** M²

- From **1st** Floor To **5th** Floor .



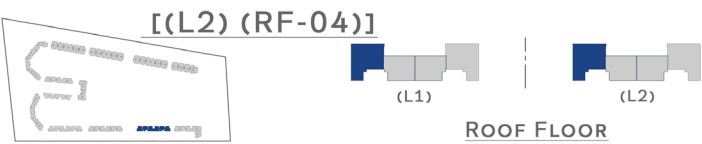
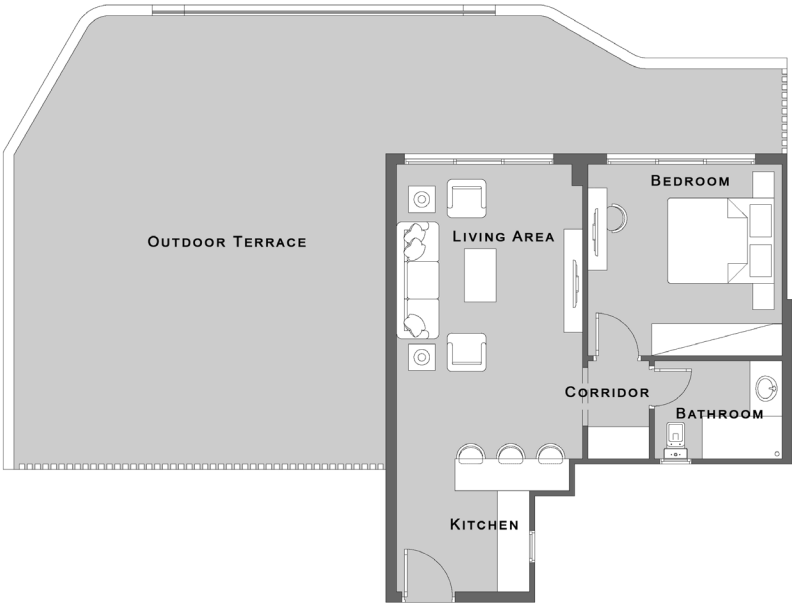
EXPERIENCE BEAUTY DIFFERENTLY



ROOF FLOOR

1 Bedroom

Area = **75.40** M²
- Outdoor Terrace = 89.98 m² .



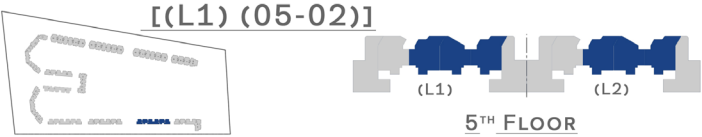
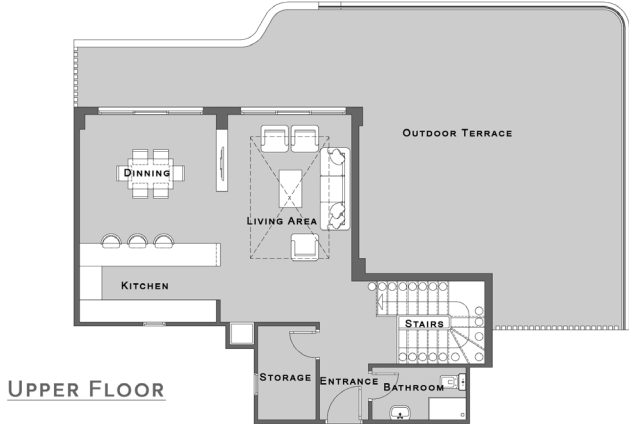
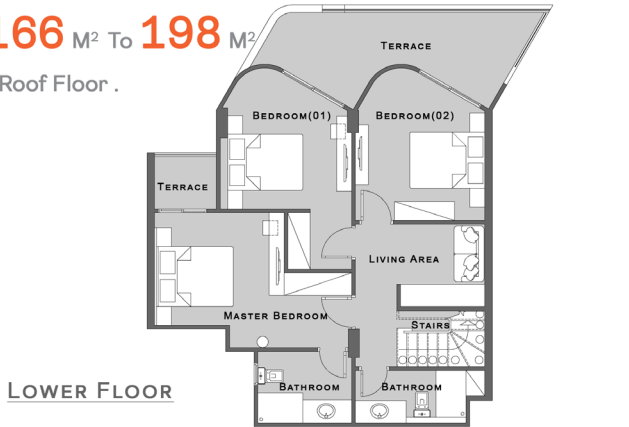
WHERE BEAUTY FIND'S IT'S DESTINATION



ROOF FLOOR & FIFTH FLOOR

D - Villa

Area = Start **166** M² To **198** M²
- **5th** Floor & Roof Floor .





Jamila®

NORTH COAST

NEW JERSEY
DEVELOPMENTS



16107